

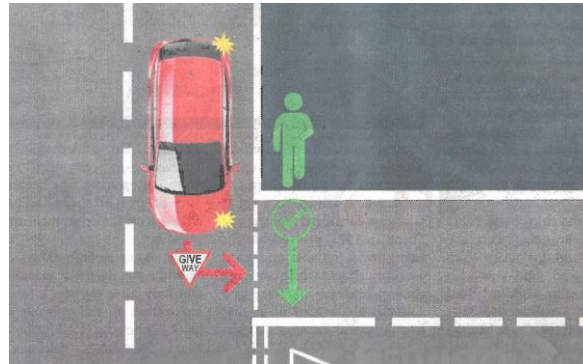
Rule H1 - New Hierarchy of Road Users

Drivers of vehicles that can cause the greatest harm in the event of a collision bear the greatest responsibility to take care and reduce the danger to others. The principle applies to HGVs, buses, LGVs, cars and motorcycles, but cyclists and horse riders likewise have a responsibility to reduce danger to pedestrians.

Cyclists

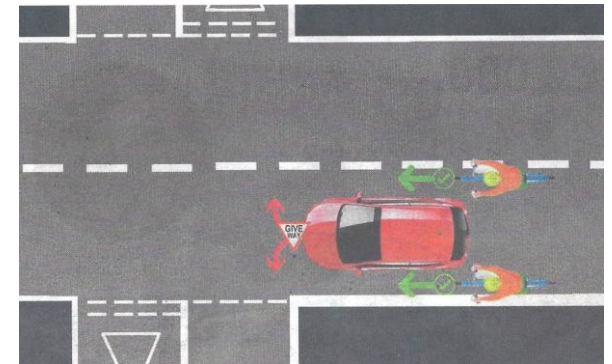
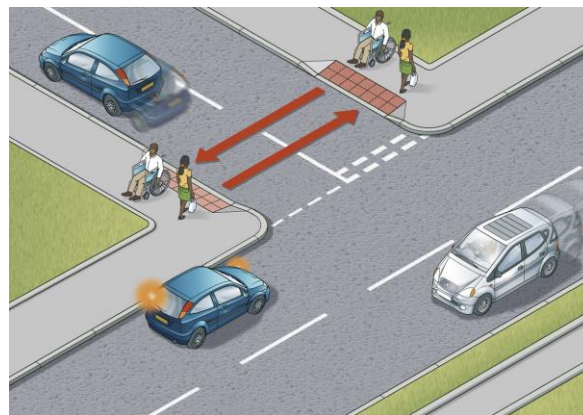
The New Highway Code confirms it is **not illegal for cyclists to ignore cycle lanes**. There is updated guidance for people cycling about positioning themselves which includes: **riding in the centre of their lane on quiet roads, in slower-moving traffic and at the approach to junctions or road narrowings**. Also keeping at least 0.5 metres (just over 1.5 feet) away from the kerb edge (and further where it is safer) when riding on busy roads with vehicles moving faster than them.

Note: cyclists can undertake on the inside or overtake on the outside of a vehicle at their own discretion. The **updated code confirms that cyclists may pass slower-moving or stationary traffic on their right or left**. They should proceed with caution as people driving may not be able to see them. This is particularly important: on the approach to junctions. See Rule H3 diagrams to the right >>



Rule H2: New priority for pedestrians at road junctions

At a junction, drivers, motor cyclists, horse riders and cyclists should give way to pedestrians crossing or waiting to cross a road into which or from which you are turning.



Rule H3: New priority for cyclists when cars are turning

Drivers and motorcyclists should not cut across cyclists going ahead when you are turning into or out of a junction or changing direction of lane. This applies whether the cyclist is using a cycle lane or riding ahead on the road and you should give way to them. Do not turn at a junction if to do so would cause the cyclist going straight ahead to stop or swerve. A driver should stop and wait for a safe gap in the flow of cyclists if necessary.

