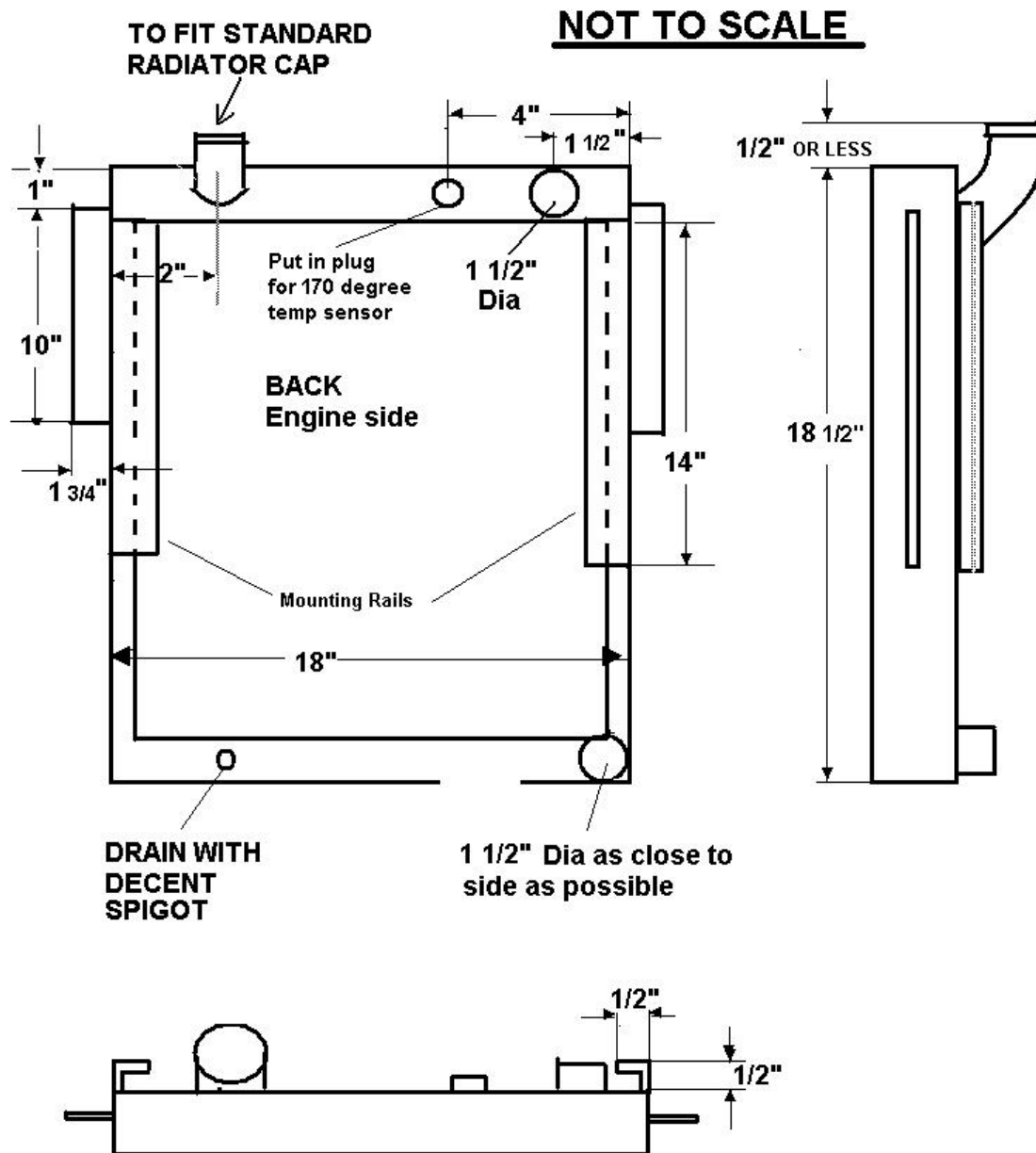


## Design for a bespoke aluminium radiator for an MGBGTV8 Conversion



The idea with the 'mounting rails' is to make small angle aluminium bars from 3/8ths or such that can be bolted to them. Thus one could position an electric fan wherever it was wanted by drilling appropriate holes in rails and cross bars. These bars I can make myself but if you want to include two with the price.....



The reason for the efficiency of aluminium radiators is due to the mechanical strength of aluminium as opposed to copper. Thus the copper tubes can be replaced by thin 1" rectangular hollow "bars" giving far more surface area. This ability more than amply compensates copper's thermal conductivity advantage of 230 BTU/hr-ft compared with aluminium's 137 BTU/hr-ft.