

Brackets for the brake servo – MGBGTV8



Bob Grieves, with a relatively late rubber bumpered MGBGTV8 (Black 2788), raised a query on the V8BB saying “does anyone know what is supporting the end of the brake servo? Mine is just held in place by the P bracket on the casting where the pipes are connected. I've taken off the washer bottle holder and there is not, and never has been, anything fitted to the 3 studs on the end of the servo! Problem is, I removed a cloth from behind the servo, and now it vibrates against the bulkhead. Yes I know - put the cloth back - but this is not an "engineering" solution.”

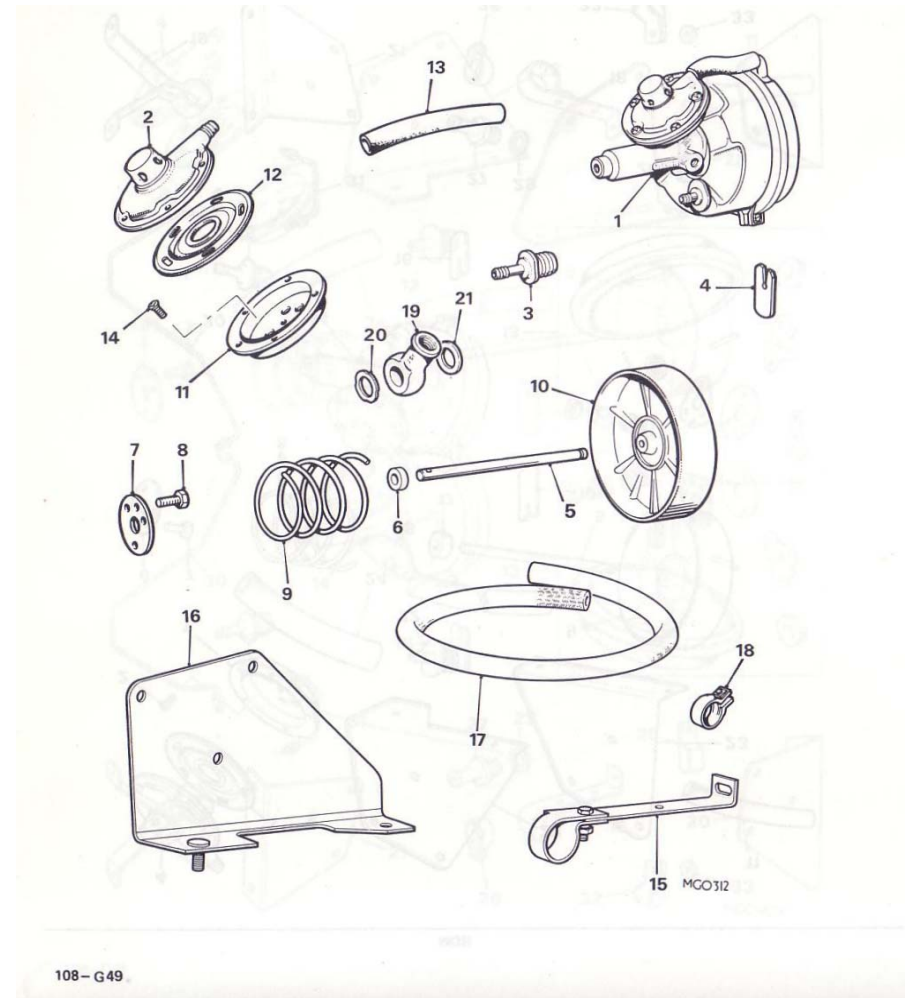
Dave Wellings responded saying “it's been a long time since I removed one, but I know there is a bracket with a stud which passes through the bulkhead into the passenger footwell, where there is a nut and washer. There is also, as far as I recall, a nut into the bulkhead somewhere around the washer bottle carrier. It sounds like yours may be missing.

Matteo Masi, a V8 enthusiast in Italy, then provided a definitive reply “the servo has two brackets - BHH1149 (at the front) and BHH1148 (at the rear, to be fitted to the three studs on the end of the servo). It seems your car is missing the second one. The servo could be fitted with the only rear bracket, which is the bigger one, but it won't be firmly secured with the only front bracket. Both items are NLA but Moss and other spares suppliers sell a bracket kit including both brackets. As I am missing the front bracket please let me know if you want to buy a kit - we could buy it together.”

Bob Grieves later returned saying “now that I have removed the washer bottle holder, I can see that the rear bolt goes through to the footwell and has a rubber

plug in it, the front bolt also holds the washer bottle holder in place. I had this discussion with someone at the MG Car Club on Monday and he suggested that as it was a 1976 (Feb) car, it should have the servo on the back of the peddle box. But it seems that this was not the case with the MGBGTV8s.

Thanks for all your help and a front bracket will be flying down to Italy soon. It did cross my mind that Matteo's car was either in front or behind mine when they came down the production line, as he is missing the front bracket!”



Source: Parts Catalogue MGB Tourer, GT and V8 up to September 1976
AKM0039 (February 1977 1st Edition) page 108-G 49 Servo system RHD and V8

Brackets for the brake servo – MGBGTV8

MGB-TOURER,GT AND V8-UP TO SEPTEMBER 1976					
Ill. No.	Part No.	DESCRIPTION	Qty.	Change Point	REMARKS
SERVO SYSTEM RHD AND V8					
1	BHA 5076	SERVO ASSEMBLY \$.....	1		
2	37H 3812	Cover.....	1		
3	37H 4896	Valve-non-return.....	1		
4	27H 2929	Key	NLA		
5	27H 9314	Push-rod	1		
6	27H 9316	Bearing.....	1		
7	27H 9317	Plate-abutment	1		
8	27H 9318	Screw-shell to body	3		
9	27H 9319	Spring-return	1		
10	37H 3813	Piston-vacuum	NLA		
11	27H 9309	Housing-lower	1		
12	27H 9311	Diaphragm-air control valve	1		
13	27H 9321	Pipe	1		
14	37H 3251	Screw	3		
→ 15	BHH 1149	BRACKET ASSEMBLY	1		
	SH 604061	Screw	1		
	PWZ 104	Washer-plain.....	1		
	LWZ 204	Washer-spring	1		
	NH 604041	Nut	1		
	PMZ 310	Screw-bracket	1		
	PWZ 103	Washer-plain.....	1		
	LWZ 203	Washer-spring	1		
	ANZ 103	Nut	1		
→ 16	BHH 1148	Bracket-rear	1		
	WL 600051	Washer-spring	1		
	PWZ 105	Washer-plain.....	1		
	HZS 506	Screw	1		
	21A 2255	Hose-vacuum	1		
	BHA 5044	Adaptor-manifold	1		
17	BHA 5039	Hose-vacuum	1		
18	AHC 234	Clip-hose.....	NLA		
	PMZ 316	Screw-hose to bulkhead.....	1		
	PWZ 203	Washer-plain.....	1		
	WL 700101	Washer-spring	1		
	AHC 735	Piece-distance	NLA		
19	7H 7851	Banjo.....	1		
20	233220	Gasket.....	1		
21	3H 550	Gasket.....	1		
	FNZ 105	Nut-servo to rear bracket.....	3		
	WL 600051	Washer-spring	3		
	HZS 406	Screw-rear servo bracket to bulkhead	1		
	PWZ 204	Washer-plain.....	2		
	LNZ 104	Nut	2		
					(C)G-HN5-328101 TO 410000
					(C)G-HN5-328801 TO 410350
					(C)G-D2D1-101 TO 2903
					Not V8 V8
					Not V8

Source: Parts Catalogue MGB Tourer, GT and V8 up to September 1976
AKM0039 (February 1977 1st Edition) page 108-G 50 Servo system RHD and V8