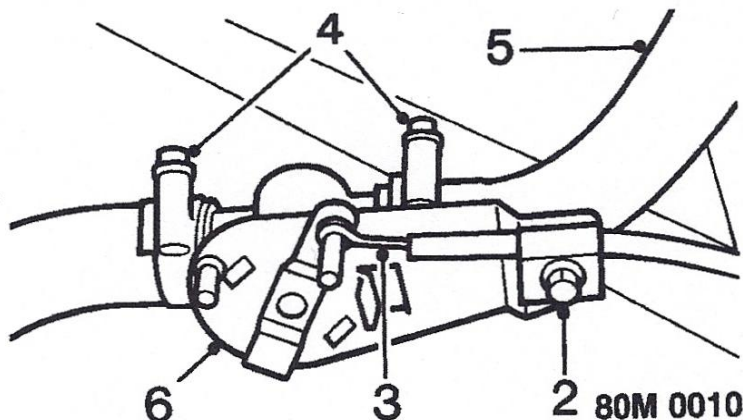

HEATER VALVE

Service Repair No. 80.10.16

Remove

1. Drain cooling system, see **MAINTENANCE**.



2. Slacken clamp and disconnect outer cable from heater valve.
3. Disconnect inner cable from heater valve lever.
4. Slacken 2 heater hose clips.
5. Disconnect outlet hose from valve.
6. Remove heater valve from inlet hose.

Refit

1. Fit heater valve to inlet hose, with lever positioned horizontally.
2. Connect outlet hose to valve and tighten hose clips.
3. Set heater control to COLD (BLUE) position.
4. Set heater valve to fully closed position (right)
5. Connect inner cable to heater valve lever, position outer cable and tighten clamp.
6. Check heater valve lever for full travel.
7. Refill cooling system, see **MAINTENANCE**.

New RV8 heater coolant valves available

Clive Wheatley reports he has had a batch of new RV8 heater coolant valves made by a specialist supplier in the West Midlands and now has them available in stock at **£39.95** including VAT plus post and packaging.

Clive Wheatley mgv8parts

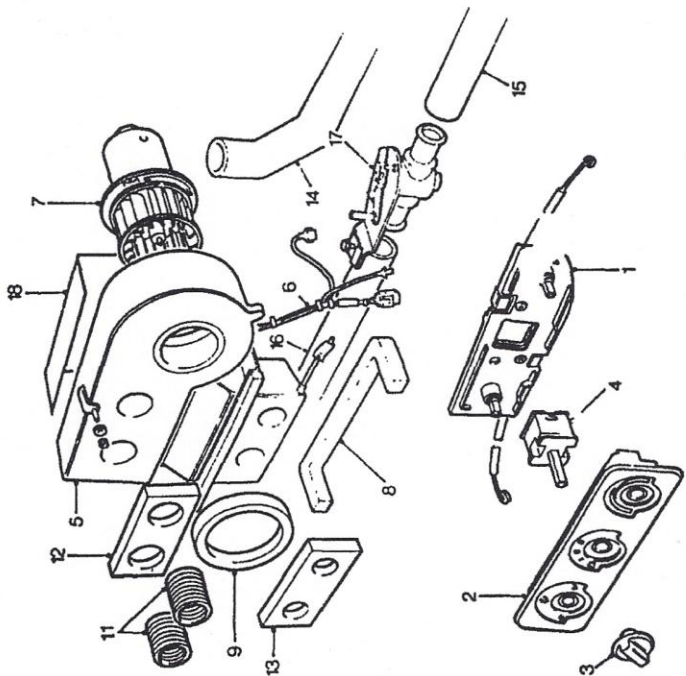
High Grosvenor Workshops
Worfield
Bridgnorth
Shropshire WV15 5PN
Tel: 01746 710810
sales@mgv8parts.com
www.mgv8parts.com

Source: MG RV8 Repair Manual AKM7153ENG

Need to get a copy of the MG RV8 Repair Manual on a convenient CD?
<http://www.v8register.net/subpages/BandGRV8technicalinfoCD.htm>

New RV8 heater coolant valves available

| 111111 Part Number | 123456 Description | Quantity | Change Point | Remarks |
|-------------------------|-------------------------------------|----------|--------------|--|
| HEATING AND VENTILATION | | | | |
| 1 ZKC 5121 | Heater control mechanism | 1 | | |
| 2 ZKC 5114 | Lightbox-heater control | 1 | | |
| 3 ZKC 5120 | Knob-heater control | 3 | | |
| 4 EEP 116 | Fan-control switch | 1 | | |
| AFU 1349 | Screw-controls to fascia | 2 | | |
| 14A 7033 | Grommet-control cable | 1 | | |
| ZKC 5142 | Clip-control cable to tunnel | 1 | | |
| AFU 1926 | Lo-cut-control cable clip to tunnel | 1 | | |
| AB 608065 | Screw-control cable clip to tunnel | 1 | | |
| 5 ZKC 5108 | HEATER ASSEMBLY (Less air con) | 1 | | TO (V)640 (V)640 TO 971 |
| 5 ZKC 6917 | HEATER ASSEMBLY (Less air con) | 1 | | One rear upper fixing |
| 5 ZKC 6822 | HEATER ASSEMBLY (Air con) | 1 | | |
| 5 ZKC 6940 | HEATER ASSEMBLY (Less air con) | 1 | | (V)971 ON Two rear upper fixings |
| 5 ZKC 6941 | HEATER ASSEMBLY (Air con) | 1 | | |
| 6 ZKC 10005 | Matrix-heater | 1 | | |
| 6 ZKC 5131 | Harness-blower | 1 | | |
| 7 ZKC 5132 | Motor and fan | NLA | | |
| 7 ZKC 6918 | Motor and fan | 1 | | Use ZKC 6918 |
| SE 105105 | Screw-motor and fan to heater | 4 | | |
| 8 BMU 2772 | Seal-heater to body | NLA | | |
| 8 ZKC 6916 | Seal-heater to body | 1 | | Use ZKC 6916 |
| 9 ZKC 5106 | Seal-heater-rear | 1 | | |
| A7 610071 | Seal-blower inlet | 1 | | |
| WC 105801 | Bolt-heater to body | 4 | | |
| YVC 10017 | Washer-heater to body | 4 | | |
| 10 FN 105045 | Clip-heater harness | 1 | | |
| 11 ZKC 5141 | Nut-heater top fixing | 1 | | |
| 12 ZKC 5138 | Duct-heater box to face vents | 2 | | |
| 13 ZKC 5112 | Seal-duct(heater box to face vents) | 1 | | |
| 14 GRH 1320 | HOSE | 1 | | |
| 15 GRH 1319 | Heater return-heater to gine | 1 | | |
| 16 GRH 1318 | Heater feed-engine to valve | 1 | | |
| 17 ZKC 5119 | Heater feed-valve to heater | 1 | | |
| CN 100258 | Valve-coolant-heater | 5 | | |
| CN 100308 | Clip-heater hoses | 1 | | |
| 18 ZKC 5136 | Clip-hose return-engine | 1 | | |
| SE 105101 | Heatshield-heater | 1 | | |
| ZKC 5111 | Screw-heatshield to heater | 4 | | |
| | Drain Tube-plenum | 1 | | |



MJ 0418

Source: RV8 Parts Microfiche page K03